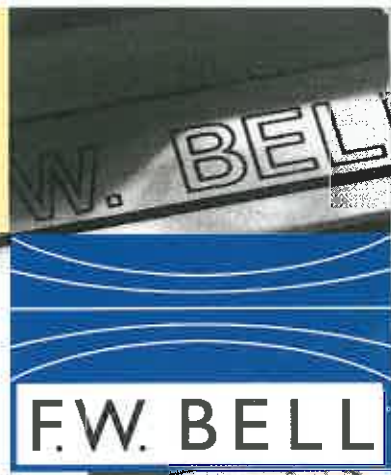


HAND-HELD INSTRUMENTS





How THE INDUSTRY MEASURES QUALITY

Leading-edge design and development. An unequalled commitment to quality control. A history of setting world-wide standards for ease of use, accuracy, reliability and value. This is what distinguishes the F.W. Bell family of clamp-on meters and hand-held products. And it's why technical professionals throughout the world are turning to us for all their hand-held measurement requirements.

Our revolutionary Model mA-2000 measures below one milliampere with clamp-on convenience. Our Utility Master UM-7900 dramatically reduces the cost of multi-phase power measurements. And our selection of non-contact current meters and probes eliminates the need for breaking the circuit to make in-line measurements. Each of our hand-helds measures both dc and ac current. Each is ergonomically designed for comfort. And when it comes to gaussmeter technology, we are a world leader. Our Model 4048 has the advantage of a bench-style instrument in a hand-held package.

The F.W. Bell difference? A select group of technical professionals dedicated to ever-increasing standards of product quality and customer satisfaction ... advantages immediately available to you through today's most complete family of clamp meters and probes.





MODEL MA-2000 CLAMP-ON MA METER

PAGES 4-5

<ul style="list-style-type: none"> Measures low-level dc and ac currents from 0 to 2,000 mA Allows measurements without breaking circuits Basic dc accuracy of 1% of reading Resolution as low as 0.1 mA Built-in 3 1/2-digit display True RMS measurement 	ac Range 0-200 mA (low) 0-2,000 mA (high) peak	dc Range ±0-200 mA (low) ±0-2,000 mA (high)	Aperture 0.21" (5.3 mm)	Output 1 mV/mA BNC connection
------------------------------------------------------------------------------------------------------------------------------------------------------------------------------------------------------------------------------------------------------------------------------------------------------------------------	-------------------------------------------------------------	----------------------------------------------------------	-----------------------------------	-----------------------------------------



MODEL CG-100A CLAMP-ON CURRENT PROBE (200 A) WITH ANALOG OUTPUT

PAGES 6-7

<ul style="list-style-type: none"> Measures dc and ac currents Comfortable handshake grip for easy use 100% overrange capability Analog output for connection to voltmeter, oscilloscope or recorder through standard banana jacks 	ac Range 10 A 100 A	dc Range ±10 A ±100 A	Aperture 0.75" (19 mm)	Output ±1 V full scale
------------------------------------------------------------------------------------------------------------------------------------------------------------------------------------------------------------------------------------------------------------------------------	----------------------------------	------------------------------------	----------------------------------	----------------------------------



MODEL CG-100D CLAMP-ON CURRENT PROBE (200 A) WITH DISPLAY

PAGES 6-7

<ul style="list-style-type: none"> Measures dc and ac currents Built-in display for easy readings Comfortable handshake grip for easy use Analog output for connection to voltmeter, oscilloscope or recorder through standard banana jacks 	ac Range 200 A	dc Range ±200 A	Aperture 0.75" (19 mm)	Output ±2 V full scale
---------------------------------------------------------------------------------------------------------------------------------------------------------------------------------------------------------------------------------------------------------------------------------------	--------------------------	---------------------------	----------------------------------	----------------------------------



MODEL CG-120A CLAMP-ON CURRENT PROBE (500 A) WITH ANALOG OUTPUT

PAGES 6-7

<ul style="list-style-type: none"> Measures dc and ac currents Comfortable handshake grip for easy use Analog output for connection to voltmeter, oscilloscope or recorder through a built-in 5-foot cable with standard banana jacks 	ac Range 50 A 500 A	dc Range ±50 A ±500 A	Aperture 0.75" (19 mm)	Output 0.5 V full scale
------------------------------------------------------------------------------------------------------------------------------------------------------------------------------------------------------------------------------------------------------------------------	----------------------------------	------------------------------------	----------------------------------	-----------------------------------



MODEL UM-7900 LARGE APERTURE 9-IN-1 CURRENT/POWER METER

PAGES 8-9

<ul style="list-style-type: none"> Reads and displays 9 parameters Advanced display design for front-view reading Pushbutton selections and functions RS-232 Performs 3-phase power measurement at 20% the cost of 3-clamp mechanisms 	Measures <ul style="list-style-type: none"> dc current ac current Power factor True power (kW) Reactive power (kVAR) Apparent power (VA) Phase angle ac voltage Frequency 	Aperture Large 2 3/8" (60.3 mm)	Output RS-232, serial interface (1,200 baud)
------------------------------------------------------------------------------------------------------------------------------------------------------------------------------------------------------------------------------------------------------------------------------------------	-------------------------------------------------------------------------------------------------------------------------------------------------------------------------------------------------------------------------------------------------------------------------	-------------------------------------------	--------------------------------------------------------



MODEL UM-7700D CURRENT/POWER PROBE WITH DISPLAY

PAGES 8-9

<ul style="list-style-type: none"> Measures dc and ac current and ac power Reads up to 1,000 A, dc and ac Power measurements up to 660 kW High accuracy In-line display 	ac Range 1 to 1,000 Aac	dc Range ±1 to 1,000 Adc	Power Range 1 to 660 kW	Aperture Large 2 3/8" (60.3 mm)
----------------------------------------------------------------------------------------------------------------------------------------------------------------------------------------------------------------------------	-----------------------------------	------------------------------------	-----------------------------------	-------------------------------------------



MODEL UM-7700 LARGE APERTURE CURRENT/POWER PROBE WITH ANALOG OUTPUT

PAGES 8-9

<ul style="list-style-type: none"> Large aperture Reads up to 1,000 A, dc and ac Power measurements up to 330 kW High accuracy Analog output for connection to a digital voltmeter, oscilloscope or recorder 	Measures <ul style="list-style-type: none"> dc current ac current ac power 	Aperture Large 2 3/8" (60.3 mm)	Output ±1 mVdc/Adc ±1 mVac/Aac ±1 mVdc/kWac
-----------------------------------------------------------------------------------------------------------------------------------------------------------------------------------------------------------------------------------------------------------------	--------------------------------------------------------------------------------------------------------------------	-------------------------------------------	-------------------------------------------------------------



MODEL UM-1000 LARGE APERTURE CURRENT PROBE (1,000 A) WITH ANALOG OUTPUT

PAGES 8-9

<ul style="list-style-type: none"> Measures dc and ac currents Reads up to 1,000 amps, dc and ac High accuracy Analog output for connection to a digital voltmeter, oscilloscope or recorder 	ac Range 1 to 1,000 Aac	dc Range ±1 to 1,000 Adc	Aperture Large 2 3/8" (60.3 mm)	Output ±1 mV/A
----------------------------------------------------------------------------------------------------------------------------------------------------------------------------------------------------------------------------------------	-----------------------------------	------------------------------------	-------------------------------------------	--------------------------



MODEL C-600 HAND-HELD DIGITAL MULTIMETER

PAGE 10

<ul style="list-style-type: none"> Measures dc and ac voltage/current and resistance Compact and fully portable 1% accuracy 3 1/2-digit display for easy reading IEC 348 safety rating Auto-zeroing for dc measuring Audio continuity indicator 	ac/dc Current Range 200 A 600 A	ac/dc Voltage Range 200 Vac 750 Vac ±200 Vdc ±1,000 Vdc	Resistance Range Up to 2,000 Ω	Aperture 1.22" (31 mm)
----------------------------------------------------------------------------------------------------------------------------------------------------------------------------------------------------------------------------------------------------------------------------------------------------------------------	----------------------------------------------	----------------------------------------------------------------------------	------------------------------------------	----------------------------------



MODEL 4048 HAND-HELD DIGITAL GAUSS/TESLA METER

PAGE 11

<ul style="list-style-type: none"> Measures dc and ac magnetic fields Self-calibration and auto or manual range switching 3 1/2-digit custom-formatted LCD Switch-selectable Gauss and Tesla reading Transverse probe, extension cable, chamber for zeroing and four AA batteries included with standard model 	Range 200 G (20 mT) 2 kG (200 mT) 20 kG (2 T)	Basic dc accuracy ±2% of reading
-------------------------------------------------------------------------------------------------------------------------------------------------------------------------------------------------------------------------------------------------------------------------------------------------------------------------------------------------------------------	---------------------------------------------------------------	----------------------------------



MODEL 4060 ELF (EXTREME LOW FREQUENCY) METER

PAGE 12

<ul style="list-style-type: none"> Measures extreme low frequency magnetic fields from electrical equipment and transmission lines Compact and lightweight Large, easy-to-read 3 1/2-digit display 100% solid-state F.W. Bell circuitry 	Range 1 to 1,999 mG (low) 0.01 to 5 G (high)	Resolution 1 mG (low) 10 mG (high)	Accuracy 1% reading
-----------------------------------------------------------------------------------------------------------------------------------------------------------------------------------------------------------------------------------------------------------------------------------	-----------------------------------------------------------	-------------------------------------------------	-------------------------------

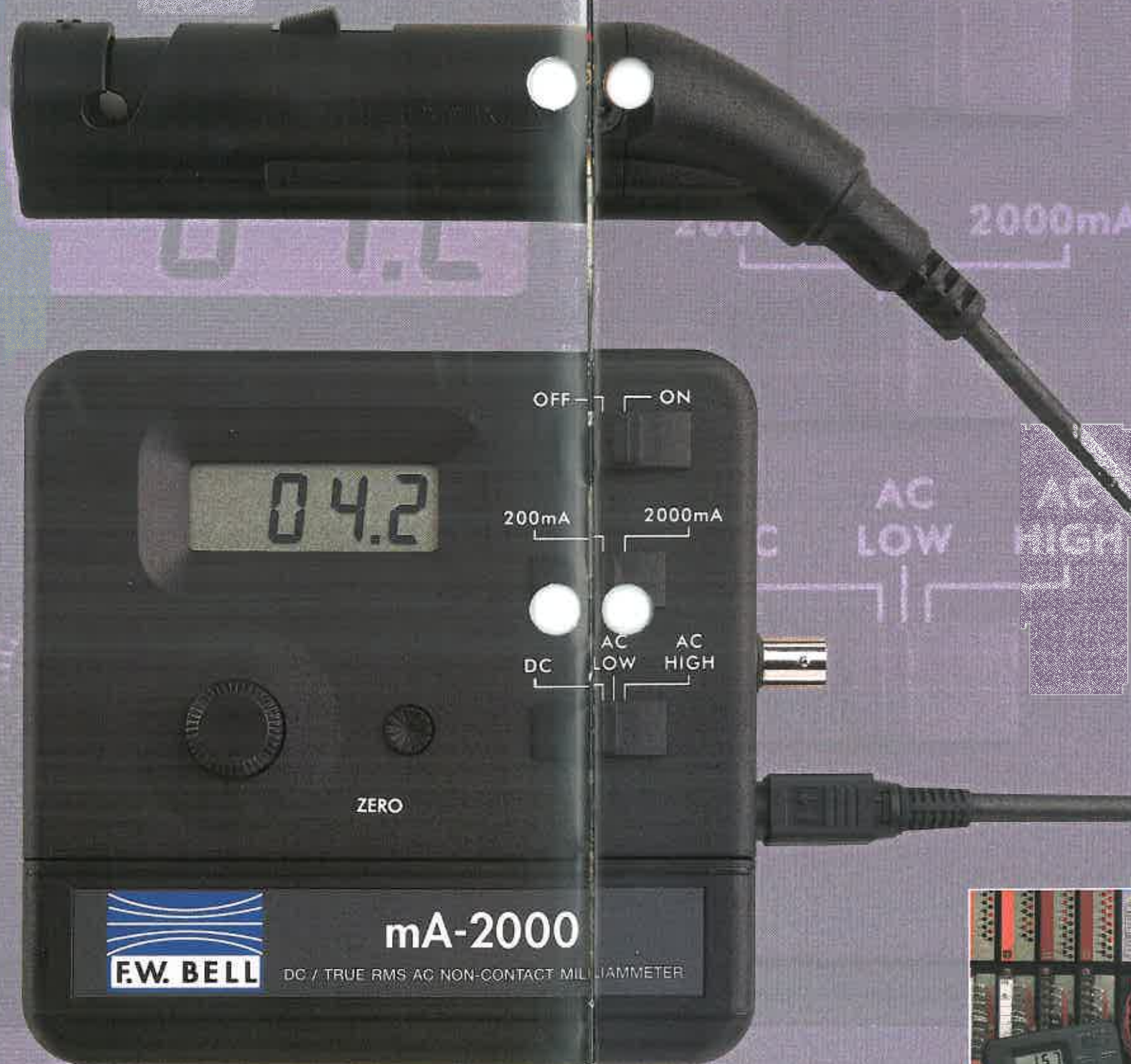




A CLAMP-ON THAT MEASURES BELOW ONE MILLIAMPERE WITH RESOLUTION TO 0.1 MILLIAMPERE? YOU BET!

The Model mA-2000 is rapidly becoming the clamp-on meter of choice for measuring very low dc and ac currents. And the reason is simple: most clamp-ons can only measure down to 1A. The Model mA-2000 measures to below 1mA with resolution of 0.1mA. That's a full 1,000 times better resolution than most other clamp-ons!

The revolutionary Model mA-2000 is today's only choice for troubleshooting 4–20mA control loops. It belongs anywhere process control is critical — from the largest manufacturing environment to the most demanding R&D lab. Technicians rely on the Model mA-2000 for extremely accurate and inexpensive diagnostic measurements. And there are hundreds of other applications. It features an easy-to-read 3½-digit display and an analog output for connection to an oscilloscope or recorder. If your requirements include low-level dc and ac current measurements of any kind, you must look at the Model mA-2000. There's simply no clamp-on alternative.



FEATURES

- Measures low-level dc & ac current from 0 to 2,000 mA with resolution as low as 0.1 mA
- Basic dc accuracy of 1% of reading
- True RMS measurement
- Frequency range dc to 100 kHz
- Easy-to-read 3½-digit display
- BNC analog output for connection to oscilloscope or recorder
- Built to IEC 1010 safety standards*
- Supplied with a hard carrying case

APPLICATIONS

- Troubleshooting 4–20mA control loops
- Isolating faults on electronic circuits
- Verifying power supply current
- Automotive control diagnostics
- Measuring ground currents
- Low current measurements in R&D laboratories

SPECIFICATIONS

Measuring Circuit

Range	0–200 mA dc or RMS 0–2,000 mA dc or ac peak
Low	
High	
Resolution	on 200 mA range on 2,000 mA range
0.1 mA	
1 mA	
Frequency Range	dc to 100 kHz dc to 200 Hz
ac Low	200 Hz to 100 kHz
ac High	200 kHz
–3 dB	
Accuracy (±3 counts)	
dc	1% reading
ac up to 200 Hz	2% reading
ac 200 Hz to 400 Hz	4% reading
ac 400 Hz to 40 kHz	2% reading
ac 40 kHz to 100 kHz	3% reading
Repeatability (±3 counts)	0.5% reading
Readout	3½-digit LCD

Output

Analog	1 mV/mA
Connector	BNC
Noise	< 100 µV RMS

Influences on Accuracy

Temperature Coefficient	0.01°C max
Adjacent Conductor	< 100 µA/A

General Information

Operating Temperature	0°C to +50°C
Storage Temperature	–25°C to +70°C
Battery	Two 9V alkaline (NEDA 1640 A)
Battery Life (typical)	15 hours
Safety	IEC 1010, Cat 2, 300V, pollution degree 2*
Aperture	0.21" (5.3 mm)
Probe Size	Length 6.25" (159 mm) Diameter 1.2" (30 mm)
Meter Size	Length 5.2" (132 mm) Width 5.3" (135 mm) Height 1.5" (38 mm)

*Approval pending.





AS SIMPLE
AS SHAKING
SOMEONE'S HAND

The F.W. Bell CG Series is the most trusted and popular family of ac and dc clamp-ons in the industry. It features today's widest selection of dc units. Its ergonomic pistol design sets the standard for hand-held comfort.

The Model CG-100D features a 3½-digit LCD display located in the direct line of sight for ease of use. The CG-100A's low-end 0-10A range sets it apart from the competition as the ideal clamp-on for measuring the lower currents of today's smaller, more efficient circuitry. All models measure both ac and dc current. And each can be used in conjunction with a digital multimeter, oscilloscope or recorder via analog output jacks. With unparalleled ease of use and accuracy in the widest range of applications, the F.W. Bell CG Series of meters and probes offers hands-down current measuring superiority. It's that simple.



FEATURES

- Clamp-on operation
- Automatic reading hold
- Output jacks for use with oscilloscope
- 3½-digit LCD readout
- Fully portable
- Battery operated
- Battery low indicator



APPLICATIONS

- Measure dc and ac currents
- Measure battery-charging currents
- Measure welder currents
- Measure ac and dc ground currents
- Measure power supply ripple
- Measure battery currents in UPS systems

SPECIFICATIONS	CG-100A	CG-100D	CG-120A
Measurement Range	10 A, 100 A	200 A	50 A, 500 A
Basic Accuracy	±2% range, ±0.9 A	±3% reading	±5% reading, ±5 A
Overrange Capability	100%	none	300% (50 A range only)
Display Type	none	3½-digit LCD	none
Frequency Response	dc to 1,000 Hz	dc to 1,000 Hz	dc to 1,000 Hz
Resolution	—	0.1 A	—
Full Scale Output	1 V	2 V	0.5 V
Working Voltage	660 V RMS	660 V RMS	660 V RMS
Withstand Capability (tested between core and probe output for 1 minute)	2,400 V (60 Hz)	2,400 V (60 Hz)	2,400 V (60 Hz)

General Information

Operating Temperature	+15°C to +35°C	+15°C to +35°C	-15°C to +50°C
Storage Temperature	-10°C to +50°C	-10°C to +50°C	-40°C to +60°C
Battery	4 AA cells	4 AA cells	one 9 V
Battery Life (typical)	30 hours (alkaline)	30 hours (alkaline)	100 hours (alkaline)
Aperture	0.75" (19 mm)	0.75" (19 mm)	0.75" (19 mm)
Weight (with batteries)	14 oz (400 g)	16 oz (500 g)	14 oz (400 g)



Application Notes

- Currents under 1 A may be read with reasonable accuracy by looping a number of turns of the current-carrying conductor through the aperture, thus effectively "multiplying" the current by the number of turns.
- Connecting the analog output to an oscilloscope allows the user to see the actual current waveform.



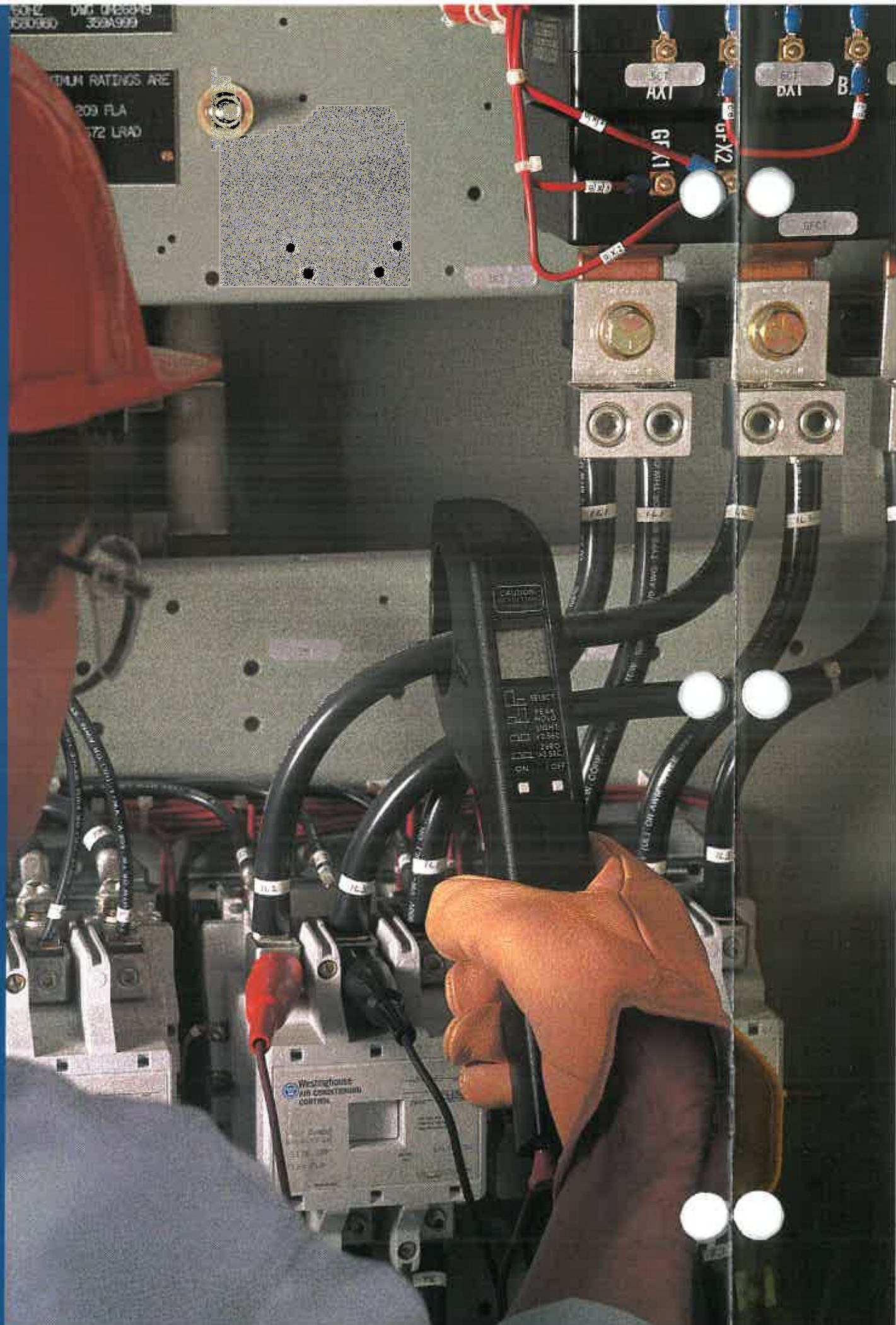
TAKE CONTROL
OF YOUR ENERGY COSTS

The extraordinary versatility of the UM-7900 Utility Master makes it the one instrument capable of handling most utility and plant measurement requirements. Lightweight, extremely rugged and featuring a 2 3/8" aperture, it allows direct measurement of ac voltage, ac and dc current, frequency, power factor, phase angle, true power, apparent power and reactive power.

The UM-7900 provides an easy and economical way to check the efficiency of motors, heating elements and other large current devices. Use it to check plant capacity or adjust plant loads. And its optional RS-232 port lets you transfer data to a central computer. The UM-7900 is ideal for plant surveys in remote locations.

MULTI-PHASE POWER
MEASUREMENTS AT A
FRACTION OF THE COST OF
OTHER POWER METERS

With the UM-7900, you can easily calculate the power of 3-phase, 3-wire circuits by first measuring two of the phases, then summing the total. For 3-phase, 4-wire circuits, you simply take three measurements and sum the total. This eliminates the need for more expensive multi-probe units.



UM-7900 FEATURES

- Liquid crystal display
- Peak/Hold
- Pushbutton selection of functions
- RS-232 interface port
- Large Aperture
- Fully portable
- Hard carrying case

APPLICATIONS

- Adjust motor loads
- Adjust plant loads
- Determine power factor correction capacitors
- Checking industrial and commercial power systems
- Plant maintenance and inspection
- Electrical utility inspections
- Determine current balance between two wires
- Measuring transformer loads

ELECTRICAL

Parameter	UM-7900	UM-7700D	UM-7700	UM-1000
ac Voltage	90 to 660Vac ±1.0% of reading, ±2V			
ac Current	1 to 25Aac ±1.0% of reading, ±1.5A 25 to 1,000Aac ±1.5% of reading, ±3A	1 to 1,000Aac 1% of reading ±1.5A (for 1 to 25A) 1.5% of reading ±3A (for 25 to 1,000A)	1 to 1,000Aac 1.5% of reading ±2A	1 to 1,000Aac 2.5% of reading ±2A
dc Current	±1 to 25Adc ±1.0% of reading, ±1.5A ±25 to 1,400Adc ±1.5% of reading, ±3A	±1 to 1,000Adc 1% of reading ±1.5A (for 1 to 25A) 1.5% of reading ±3A (for 25 to 1,000A)	±1 to 1,000Adc 1.5% of reading ±2A	±1 to 1,000Adc 1.5% of reading ±2A
Measuring Frequency	40 to 500Hz ±0.4% of reading	DC to 500Hz	DC to 500Hz	DC to 500Hz
Frequency Response (–3 dB)			3.2 kHz	3.2 kHz
Output	RS-232, serial interface (1200 baud rate)		1 mV/A for dc or ac current 1 mVdc/kW	1 mV/A for dc or ac current
Working Voltage	660Vrms maximum at current-carrying conductor	600Vrms maximum at current or voltage inputs	600Vrms maximum at current or voltage inputs	600Vrms maximum at current-carrying conductor
Actual Power	1 to 660kW < 10kW: ±2% of reading, ±1kW; > 10kW: ±2% of reading, ±1.0% FS	1 to 660kW < 10kW: ±2% of reading, ±1kW; > 10kW: ±2% of reading, ±1.0% FS	0.1 to 330kW ±3% of reading ±0.5 kW	
Safety	Built to IEC 1010 standards	Built to IEC 1010 standards	Built to IEC 1010 standards	Built to IEC 1010 standards
Phase Angle	0 to ±60° ±6° max.			
Power Factor	0.5 to 1.00 ≤ ±0.08 max.			
Apparent Power (at ±60° ±1.75% worst case)	1 to 660kVA < 10kVA ±2% of reading, ±0.5kVA 10kVA to 100kVA ±2% of reading, ±1kVA > 100kVA ±2% of reading, ±2kVA			
Reactive Power (at 0° ±1.75% worst case)	1 to 570kVARs ±3% of reading, ±5kVARs			

UM-7700D

UM-7700

UM-1000



GENERAL

Operating Temperature	0°C to +50°C	0°C to +50°C	0°C to +50°C	0°C to +50°C
Storage Temperature	0°C to +60°C	–40°C to +60°C	–40°C to +60°C	–40°C to +60°C
Battery	One 9V alkaline (NEDA 1640)	One 9V alkaline (NEDA 1640)	One 9V alkaline (NEDA 1640)	One 9V alkaline (NEDA 1640)
Battery Life	8 hours	8 hours	100 hours	100 hours
Aperture	Oval, 2 7/8" x 2 3/8" (73 mm x 60 mm)	Oval, 2 7/8" x 2 3/8" (73 mm x 60 mm)	Oval, 2 7/8" x 2 3/8" (73 mm x 60 mm)	Oval, 2 7/8" x 2 3/8" (73 mm x 60 mm)
Weight	29 oz (822 g)	29 oz (822 g)	29 oz (822 g)	29 oz (822 g)



MULTI-FUNCTIONAL CURRENT, VOLTAGE AND RESISTANCE METER

The friendly feel and favorable price of the C-600 are only two of the reasons why it's among the world's most popular multimeters. Using advanced Hall-effect technology, the C-600 measures ac or dc current, ac or dc voltage and resistance. And it measures current without breaking the circuit or disturbing insulation. The C-600 features a 3½-digit LCD and is accurate to ±1%. Fully IEC-348 compliant, it also features auto-zeroing, audio continuity indicator and display data hold. Versatile and easy to use, the C-600 is the one multimeter for electrical and electronic technicians in any industrial environment.

FEATURES

- Measures current up to 600 Adc and Aac
- Measures voltage up to 750 Vac or 1,000 Vdc
- Measures resistance up to 2,000 Ω
- Auto-zeroing for dc current
- Display data hold
- 1% basic accuracy
- 15 to 400Hz frequency range
- Large 3½-digit LCD display
- Audio continuity indicator

SPECIFICATIONS

Measuring Circuit

dc and ac Current	
Ranges	200 A, 600 A
Resolution (200 A range)	0.1 A
Resolution (600 A range)	1 A
Accuracy	±1% of range, ±5 digits
ac Frequency Range	15 to 400 Hz

dc and ac Voltage	
Ranges (dc)	±200 Vdc, ±1,000 Vdc
Ranges (ac)	200 Vac, 750 Vac
Resolution (200 V range)	0.1 V
Resolution (1,000 V range)	1 V
Accuracy	±1% of reading, ±3 digits
ac Frequency Range	15 to 400 Hz
Input Impedance	10 MΩ

Resistance	
Range	2,000 Ω
Resolution	1 Ω
Accuracy	±1% of reading, ±1 digit
Accidental Input Protection	500 Vac/dc
Continuity	Buzzer sounds below 500 Ω
Accuracy	±20%

Withstand Capabilities

Voltage Withstand	Tested at 6,000 V, 50 Hz for 1 minute
-------------------	---------------------------------------

Maximum Voltage Between Insulated Current-Carrying Conductor and Ground	1,000 Vrms
-------------------------------------------------------------------------	------------

General Information

Operating Temperature	0°C to +40°C
Storage Temperature	-20°C to +60°C with battery removed
Battery (not included)	One 9V alkaline (NEDA 1640 A)
Battery Life (typical)	50 hours
Aperture	1.22" (31 mm)
Dimensions	8.15" L x 2.52" W x 1.06" H (207 mm x 64 mm x 27 mm)
Weight	10.2 oz (290 g)

Note

Accuracies are stated at 23°C ± 1°C

APPLICATIONS

- Measure ground current dc and ac
- Pinpoint bad grounds and shorts
- Locate excessive current drains
- Determine voltage drops
- Automotive electrical system maintenance
- Electric vehicle maintenance
- General plant maintenance





THE ADVANTAGES OF A MORE EXPENSIVE, BENCH-STYLE INSTRUMENT IN A HAND-HELD PACKAGE

Fully portable, easy to use and equipped with features found in units more than twice its size, the Model 4048 hand-held gaussmeter towers above any other gaussmeter in its class. Its custom-formatted 3½-digit LCD provides a large readout of the magnetic field as well as all other information relative to the reading, instrument function and battery condition. And it comes with everything you need: transverse probe, probe extension cable, zero gauss chamber, four AA batteries and a carrying pouch. Only the world leader in gaussmeter technology could offer so many features for such a low price.



FEATURES

- Auto or manual range switching
- Instant one-button probe zeroing
- User-friendly display prompts
- 3½-digit custom-formatted LCD
- Scale suppression
- dc and ac field response
- True RMS ac response to 12 kHz
- dc and ac peak holds
- Gauss/Tesla reading, switch-selectable

APPLICATIONS

- Testing, sorting, classifying magnets
- dc and ac motor testing
- Loudspeaker testing
- Relay and solenoid testing
- TV deflection coil testing
- Pipe weld inspection
- NDT compliance testing (MIL-STD 1949A and ASTM E 709)

SPECIFICATIONS

Measuring Circuit

Ranges	200 G (20 mT), 2 kG (200 mT), 20 kG (2 T)
Resolution (200 G range)	0.1 G (10 μ T)
Accuracy (± 2 counts)	
dc	$\pm 2\%$ of reading
ac	(45 to 100 Hz) $\pm 2.5\%$ of reading (100 Hz to 3 kHz) $\pm 2\%$ of reading (3 kHz to 5 kHz) $\pm 6\%$ of reading
Temperature Effect	0.075%/°C (from 25°C, including probe)

Peak Hold

Accuracy	Same as above
ac Acquisition Time	150 ms
dc Acquisition Time	110 ms
Storage Time	Indefinite (digital hold)

General Information

Operating Temperature	0°C to +50°C
Storage Temperature	-20°C to +60°C
Battery	Four 1.5V AA alkaline batteries
Battery Life	> 60 hours
Meter Size	4" W x 1.75" H x 7" D (101.6 mm x 44.5 mm x 177.8 mm)

Probe Stem Size

Transverse T-4048-001	0.165" W x 2.5" L x 0.057" thick (4.19 mm x 63.5 mm x 1.45 mm)
Axial A-4048-002	0.165" W x 2.5" L x 0.090" thick (4.19 mm x 63.5 mm x 2.29 mm)

X-4048-003

Extension Cable	39" long (1 m)
Weight	1 lb (450 g) net, 2 lb (900 g) shipping

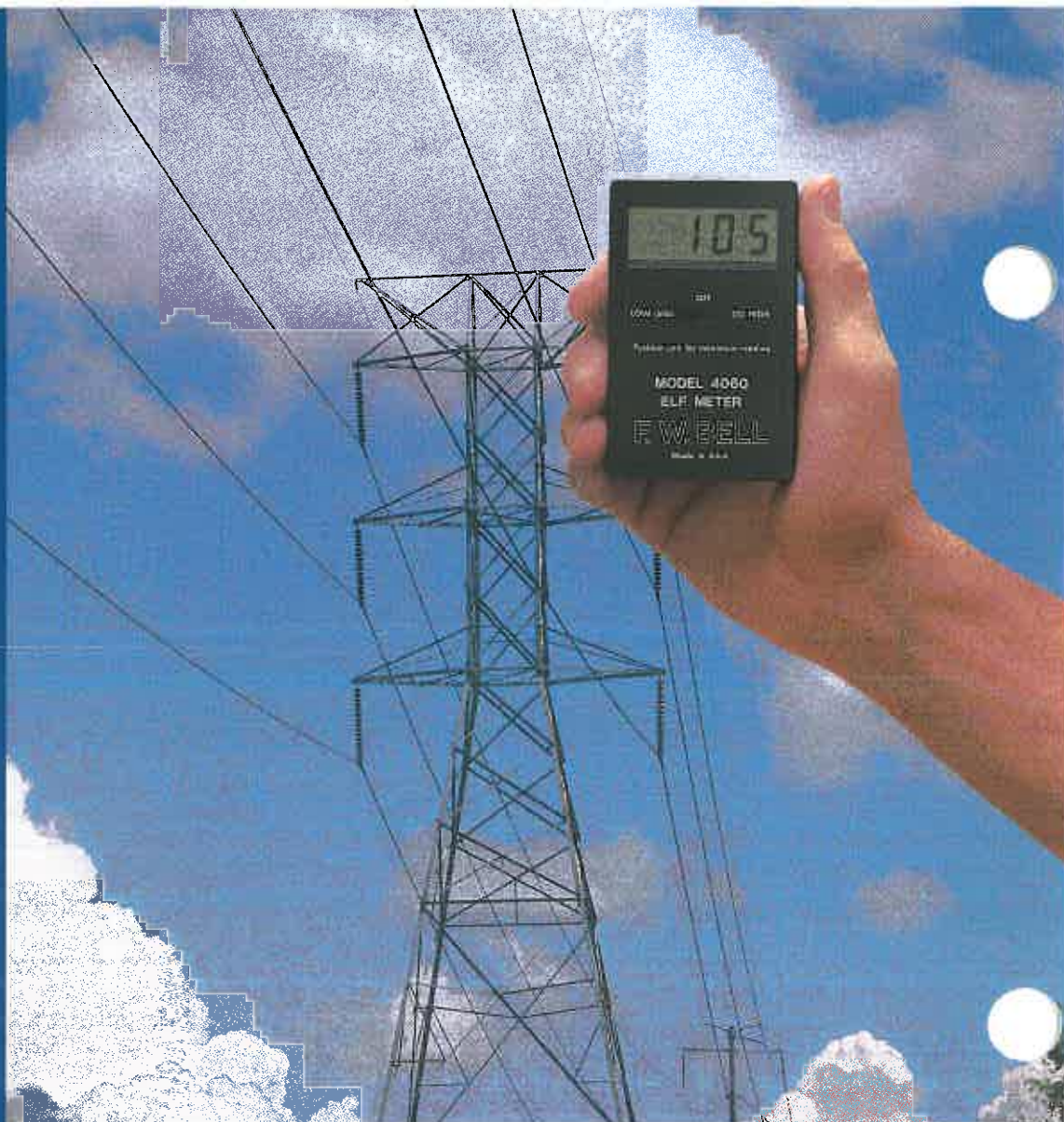


MODEL 4060 ELF METER

The Model 4060 ELF Meter is designed to measure extremely low frequency magnetic fields produced by electrical devices ranging from transmission lines to electric blankets. And the Model 4060 is a single-axis device, so you know exactly where the field you're measuring is coming from. Compact and lightweight, the pocket-sized Model 4060 is all the ELF meter you will ever need.

WHEN QUALITY MATTERS MOST

Since our founding over 50 years ago, no company has done more to put quality in the hands of its customers than F.W. Bell. And nowhere is this more evident than in our family of hand-helds. From our revolutionary mA-2000 Milli-ammeter to our Model 4060 ELF Meter, expect a level of performance, satisfaction and support that can come only from a world leader. Look to us for your most demanding measurement requirements. Look to F.W. Bell when quality matters most.



FEATURES

- Compact
- Lightweight
- Large easy-to-read 3½-digit display
- Only one switch — on/off and high/low positions
- Made by the world's leader in magnetic measuring instruments

APPLICATIONS

- Power transmission lines
- Computers
- Electric blankets
- Motors
- Microwave ovens
- Transformers
- Electrical machinery

SPECIFICATIONS

Measuring Circuit

Ranges	
Low	1 to 1,999 mG
High	0.01 to 5 G
Resolution	
Low	1 mG
High	10 mG
Accuracy (typical)	±1% of reading
Frequency	
60 Hz (Item No. 114060)	60 Hz ± 1.0 Hz
50 Hz (Item No. 114050)	50 Hz ± 1.0 Hz

General Information

Operating Temperature	-10°C to +50°C
Battery	9V carbon/zinc
Battery Life	230 hours
Size	2.4"W x 3.8"L x 1"D (61 mm x 96.5 mm x 25.4 mm)
Weight (with battery)	4.5 oz (126 g)

6120 Hanging Moss Road • Orlando, Florida 32807
407-678-6900 • FAX 407-677-5765

Specifications are subject to change without notice. Rev 9/95.